

CENTURY CP PRODUCTS

PRODUCT CATALOG



A LEGACY OF QUALITY SINCE 1993
BUILT TO LAST



TABLE OF CONTENTS

3 ABOUT CENTURY PRODUCTS

Learn more about our roots, values, and commitment to building dependable, innovative products.

4 CENTURY INDUSTRIES

Now offering a new line of services and products including injection molding, machining and more.

6 HAY FEEDERS

Durable, lightweight polyethylene hay feeders designed to stand up to the toughest pasture conditions.

12 STOCK TANKS

Heavy-duty poly stock tanks built to withstand extreme weather and daily wear and tear.

16 AUTOMATIC WATERER

Reliable, freeze-resistant waterers that keep your herd hydrated year-round with minimal maintenance.

18 MINERAL FEEDERS

Weather and tamper-resistant mineral feeders made from durable polyethylene in a variety of colors.

20 CATTLE OILERS

Low-maintenance oilers provide protection from flies and lice with every pass.

22 POLY STEPS

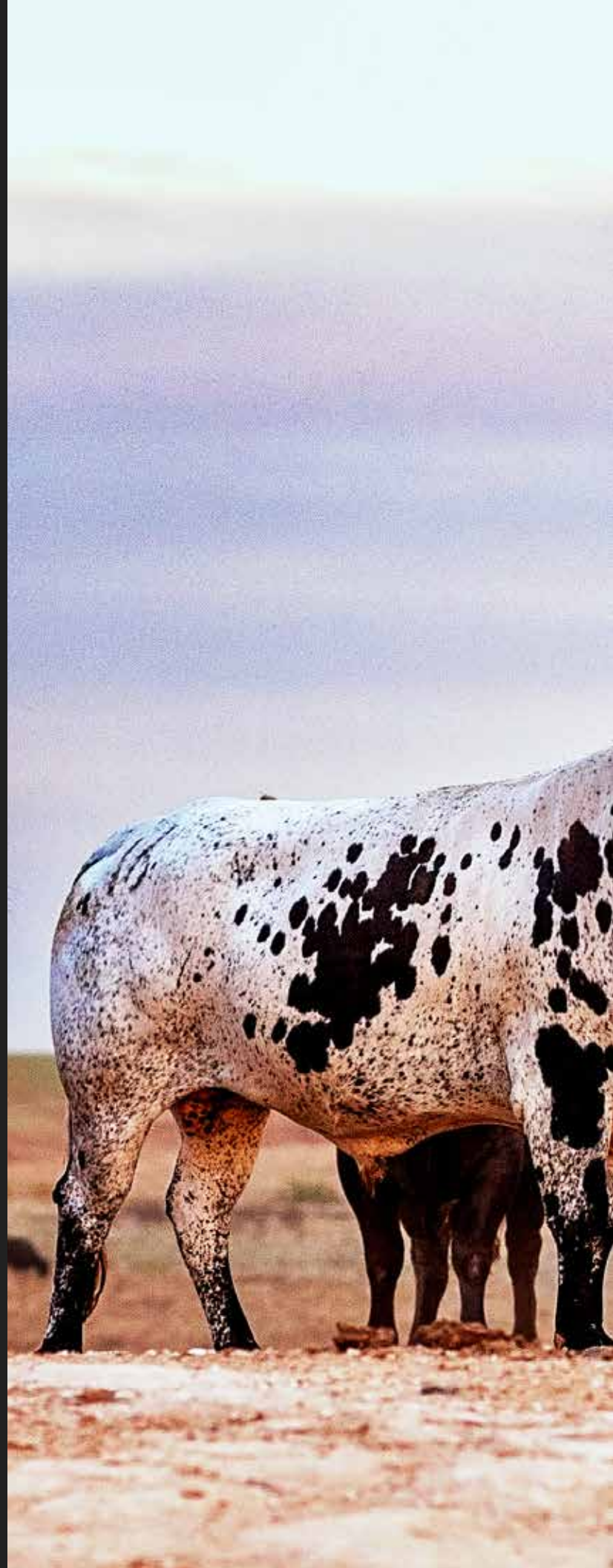
Lightweight yet sturdy steps ideal for the ranch, house, RV, business, or anywhere you need a step up.

24 SMALL ANIMAL HUTS

Provide shelter to calves and small livestock with the convenience of easy storage and handling.

26 HDPE CULVERTS

High-performance culverts offer a long-lasting, corrosion-resistant drainage solution.



ABOUT CP

Century Products has been at the forefront of innovation in the agricultural industry for more than 30 years. In 1993, former owner, Joe Payne, introduced the first poly plastic hay feeder to the market, setting a new benchmark for durability and efficiency. What began as a single revolutionary idea has grown into a full line of advanced agricultural and livestock products.



ALL CP PRODUCTS ARE PROUDLY MADE IN THE USA

Today, our offerings include feeders, stock tanks, waterers, culverts, and more — all designed to support the daily demands of farmers and ranchers. With a strong commitment to quality, innovation, and customer satisfaction, Century Products is dedicated to developing reliable solutions that meet the evolving needs of the industry.



“ At Century Products, we strive to manufacture high quality products that are extremely functional on any farm or ranch small or large. We pride ourselves on continuous commitment to improvement and a high standard of customer satisfaction. Integrity, reliability and quality always has and always will be the focus at Century Products. ”



- Jay Paul Fagan
OWNER



DID YOU KNOW?

Polyethylene pipe was developed in the early 1950's by Phillips Petroleum Company. Polyethylene is chemically inert, flexible and impact resistant over a large temperature range (-180F to 260F). It is UV protected by finely divided carbon - the most effective single additive for weathering properties.



OUR MISSION

Century Products strives to exceed our customer's expectations by manufacturing high-quality, long-lasting products in a timely fashion. The CP brand is proud to honor the tradition where a handshake is still a contract.

A NEW PARTNERSHIP

INJECTION MOLDING & PRECISION MANUFACTURING



Century Industries LLC was formed in December 2025 through a strategic partnership between Century Products LLC and K&C Manufacturing Inc. By combining expertise in product development and distribution with years of precision manufacturing experience, Century Industries offers a fully integrated domestic manufacturing solution from early-stage prototype through full-scale production. Also located in Ponca City, Century Industries reflects the same commitment to craftsmanship and quality that has defined Century Products since 1993.



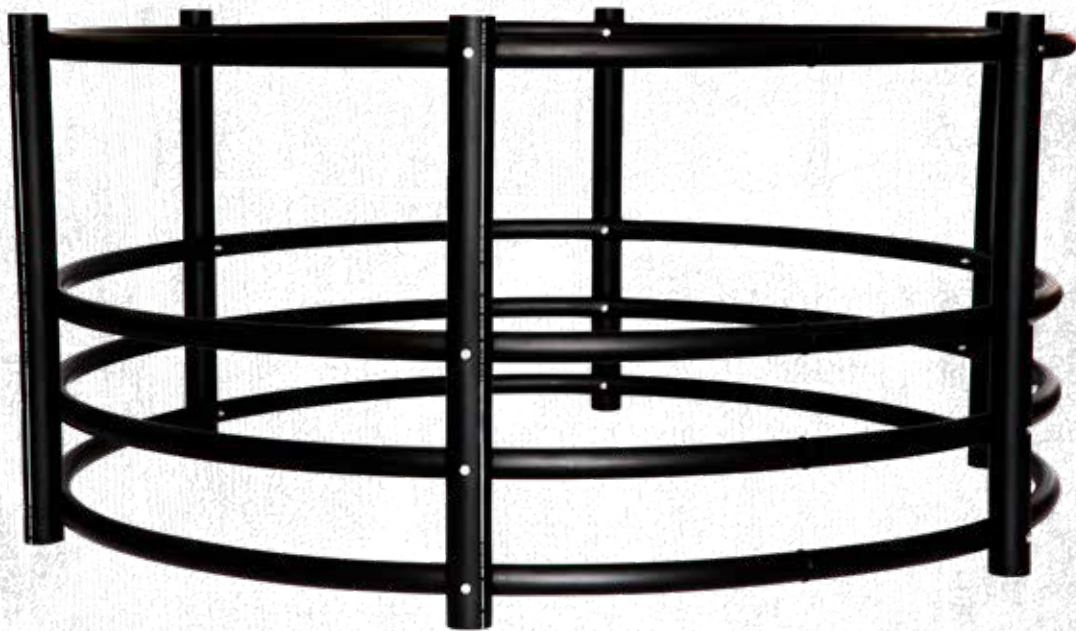
Century Industries specializes in precision CNC machining and large-scale plastic injection molding, supported by in-house engineering, fabrication, assembly, and packaging services. Their CNC capabilities span high-speed vertical milling, precision turning, drilling, tapping, and complex multi-face contouring, while their injection molding operation runs presses up to 2,425 tons, well-suited for large structural plastic components, industrial containers, and heavy-duty agricultural parts. Through ongoing investment in new technologies and expanded production capacity, Century Industries strengthens our ability to deliver high-quality American-made products to customers and dealer partners for years to come.



HAY FEEDERS

Century Products hay feeders are made from high-density polyethylene, offering exceptional strength, impact resistance, and long-term durability. Lightweight yet tough, they're easy to move and built to withstand the harshest conditions. Each feeder is infused with carbon black for powerful UV protection, preventing cracking, fading, and weather damage. With a conservative life expectancy of over 50 years, they're a long-term investment that outlasts traditional materials.





THE ORIGINAL

8' X 46" HAY FEEDER



Our original and #1 selling polyethylene bale feeder has been tested and proven as sturdy and reliable.

- 7-year warranty
- 110 lbs.
- 6 legs
- Stainless steel hardware

The first poly hay feeder on the market — engineered for strength, built to last, and trusted by ranchers for over 30 years. Unmatched in durability and performance, it's the feeder that set the standard.

ITEM # CP846

● BLACK



8' X 46" HAY FEEDER WITH ADD-ON OPTIONS

Our 8' X 46" feeder shown with Bar and Skirt Kits.

- Original 8" x 46" hay feeder
- Skirt & bar kits (see product listings on page 11)
- Great for hay conservation

ITEM # CP846 • ITEM # CPSKT • ITEM # CPBK31

7-YEAR LIMITED WARRANTY

Century Products stands behind the quality of our hay feeders with a 7-year limited warranty—one of the best in the industry. This warranty covers defects in materials and workmanship under normal use and service for the original purchaser. Built tough and backed by confidence, our feeders are designed to perform season after season. Should an issue arise, we'll repair or replace the product, or cover the reasonable cost to do so, right from our facility in Ponca City, Oklahoma. That's durability you can count on, from a company that stands by its work.

SEE WARRANTY DETAILS ONLINE ➔



FINALLY A FEEDER THAT'S BUILT **BULL TOUGH**



← **LEARN MORE ABOUT BIG COUNTRY FEEDERS**

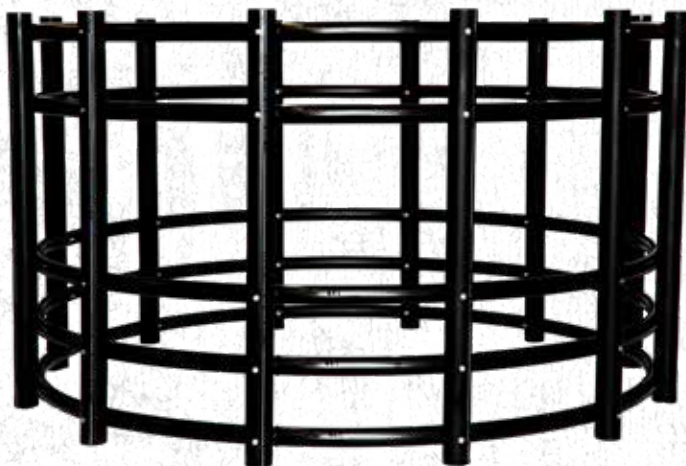


BIG COUNTRY 8' X 46" HAY FEEDER

Tough and efficient, the 8' X 46" Big Country feeder is ideal for minimizing hay waste in smaller spaces or high-traffic areas. Its 12-leg frame keeps it stable and secure against the elements.

- 12 legs
- Extremely sturdy
- Great in confinement lots
- 7-year warranty

ITEM # CPBC46 ● **BLACK**



BIG COUNTRY 8' X 56" HAY FEEDER

Designed for maximum capacity, the 8' X 56" model easily handles larger round bales. With added height and rugged poly construction, it's built to perform in wide-open pastures and demanding feeding environments.

- 12 Legs
- Added ring for larger bales
- 7-year warranty

ITEM # CPBC56 ● **BLACK**



8' X 66" BULL FEEDER

Designed for strength and stability, the 8' X 66" bull feeder handles the weight and force of mature bulls with durable poly construction and reinforced support.

- 12 legs
- Stainless steel hardware
- Works great for bulls
- 7-year warranty

ITEM # CPB866

● BLACK



8' X 56" CONE FEEDER

The 8' X 56" cone feeder is one of the best hay savers on the market.

- 12 legs
- Holds 5'-6' bales
- Extremely durable
- Not recommended for horses
- 7-year warranty

ITEM # CPCF

● BLACK



SMALL ANIMAL HAY FEEDER 5' X 24"

This 5' X 24" hay feeder is perfect for small animals and the use of small square bales.

- 4 legs
- Ideal for small animals
- Great for square bales
- Not recommended for horses
- 7-year warranty

ITEM # CP524

● BLACK





HORSE FEEDERS



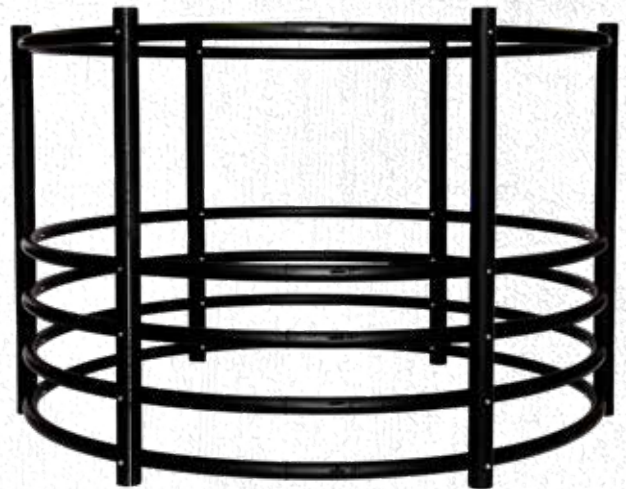
8' X 32" HORSE FEEDER

Our most popular horse feeder is one of the safest on the market. It prevents mane rub and has no metal edges, which are prone to cause injury.

- 6 Legs
- 100 lbs.
- Works well with hay nets
- Ideal for longhorn cattle
- #1 selling horse feeder
- Easy to move

ITEM # CPH832

● BLACK



8' X 66" HORSE FEEDER

Works great with hay nets while providing extra room for horses and taller animals.

- 6 Legs
- Extra-tall to prevent horses from rubbing their manes

ITEM # CPH866

● BLACK

GET MORE INFO ON CP HORSE FEEDERS ➔



HAY FEEDER ADD-ONS

WATCH ASSEMBLY VIDEOS →



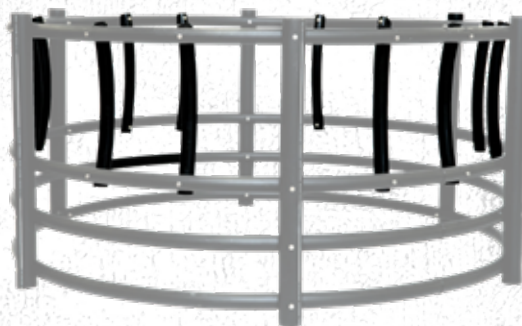
BAR KIT

This add-on includes polyethylene bars that can be fitted inside the bale feeder rings.

- 12 individual bars
- Stainless steel hardware
- Fits the 8' X 46" feeder
- Decreases hay waste

ITEM # CPBK31

● BLACK



SKIRT KIT

This polyethylene sheeting keeps your hay in the feeder, reducing waste.

- 21" x 46"
- 5/32" thick
- Stainless steel hardware
- Fits all 6-leg feeders

ITEM # CPSKT

● BLACK



TESTED THE OKLAHOMA WAY

Can your old feeders stand up to the test? Century Products hay feeders are built for unmatched strength, durability, and decades of reliable use — no rust, no rot, no compromise.



SEE THE VIDEO!



CENTURY
PRODUCTS
Official Stock Tank of the PRCA



WATER TANKS

Century Products poly stock tanks offer industry-leading strength and durability with a range of sizes to fit every operation. Trusted for more than 30 years, and now the Official Stock Tank of ProRodeo, we're committed to providing high quality products you can hang your hat on.



1000 GALLON POLY TANK

9' DIAMETER X 28" H • ROUND

This tank is built for serious capacity and rugged performance, featuring impact-resistant walls, a reinforced top lip, UV protection, and a built-in float mount.

Engineered for unmatched durability, Century Products stock tanks are built to withstand the toughest conditions, delivering superior strength, capacity, and performance—season after season.

- 145 lbs.
- 1 ¼" drain
- 16 tanks per pallet
- 3-year warranty

ITEM # CP92 ● ORANGE ● GREY



650 GALLON POLY TANK

8' DIAMETER X 2' H ROUND

350 GALLON POLY TANK

6' DIAMETER X 2' H ROUND

This 8' poly tank is 20% heavier than any other tank on the market, weighing 122 lbs.

This tank features a unique closed box design and stiffening ridges in the bottom, and built-in handles

- 122 lbs.
- 1 ¼" drain plug
- 16 tanks per pallet
- 3-year warranty

- 70 lbs.
- 1 ¼" drain plug
- 20 tanks per pallet
- 3-year warranty

ITEM # CP82 ● ORANGE ● GREY

ITEM # CP62 ● ORANGE ● GREY



150 GALLON POLY TANK 2'W X 2'H X 6'L

Featuring a durable seamless ribbed design and uniquely boxed rim this poly tank weighs 44 lbs with a 1 1/4" poly drain plug to ensure a prolonged life.

- 44 lbs.
- Compound color for long-lasting UV protection
- 20 tanks per pallet
- 3-year warranty

ITEM # CP226 ● ORANGE ● GREY

100 GALLON POLY TANK 2'W X 2'H X 4'L

Weighing in at 32 lbs, this poly tank features a 1 1/4" poly drain plug and an extra ribbed design and uniquely boxed rim for added strength and durability.

- 32 lbs.
- Compound color for long-lasting UV protection
- 20 tanks per pallet
- 3-year warranty

ITEM # CP224 ● ORANGE ● GREY

3-YEAR LIMITED WARRANTY

Century Products water tanks are backed by a 3-year warranty, giving you peace of mind that they're built to last. We stand behind every tank, because your operation deserves equipment you can count on.

SEE WARRANTY DETAILS ONLINE ➔



CENTURY PRODUCTS ARE **DURABLE**,
EASY TO CLEAN, AND **TOUGH** ENOUGH TO
STAND UP TO OUR **ROUGHEST BULLS.**

— HEATH STEWART, FRONTIER RODEO COMPANY



GET MORE INFO ON CP WATER TANKS →



80 GALLON POLY TANK 2'W X 1'H X 6'L

Weighing in at 32 lbs, this poly tank features a 1 ¼" poly drain plug and an extra ribbed design and uniquely boxed rim for added strength and durability.

- 32 lbs.
- Compound color
- 20 tanks per pallet
- 3-year warranty

ITEM # CP216 ● ORANGE ● GREY



50 GALLON POLY TANK 2'W X 15"H X 4'L

This easy handling poly tank weighs 21 lbs and is designed for strength with its extra ribbed design and uniquely boxed rim for added strength and durability.

- 21 lbs.
- No Drain
- 40 Tanks per Pallet
- 3-year warranty

ITEM # CP214 ● ORANGE ● GREY

AUTOMATIC WATERER

The Century Products Automatic Waterer delivers year-round, electricity-free hydration with durable UV-resistant polyethylene construction built for extreme weather. Available in two- or four-ball drinking well configurations, it helps keep water cleaner by limiting evaporation, algae growth, and insect exposure. The well rims feature a unique raised knob to minimize freezing, while foam insulation and heavy-duty gaskets support consistent performance in all climates. Tool-free access and a service-friendly float system make maintenance quick and easy, providing a reliable, low-maintenance solution for livestock operations.



KEY FEATURES

- 2 or 4 ball-style drinking wells
- Tool-free maintenance access
- Jobe Topaz Compact Float Valve
- Premium foam insulation
- Raised knob in ball rim prevents freezing
- No electricity required
- 3/4" hose line
- Easy-grip, 2.5" drain plug
- 90-degree shut-off valve
- Heavy-duty gaskets on lid, seal points and base
- Geothermal tubes & concrete pads available

WARRANTY DETAILS

All CP automatic waterers are backed by a 7-year manufacturer warranty on the waterer and a 2-year warranty on components.



4-HOLE WATERER ITEM # CPAW4

Herd Capacity	Approximately 150 Cattle
Water Capacity	55 Gallons
Length	45 in./114.3 cm
Width	45 in./114.3 cm
Overall Height	25 in./63.5 cm
Drinking Height	21 in./53.3 cm
Unit Weight	120 lbs./54.4 kg.

2-HOLE WATERER ITEM # CPAW2

Herd Capacity	Approximately 60 Cattle
Water Capacity	35 Gallons
Length	44 in./111.8 cm
Width	30 in./76.2 cm
Overall Height	24 in./60.9 cm
Drinking Height	21 in./53.3 cm
Unit Weight	99 lbs./44.9 kg.



LEARN
MORE





MINERAL FEEDERS

Century Products' mineral feeders deliver essential nutrients with precision and reliability, featuring a rugged poly design that resists tipping and tampering. Designed for low-profile stability, these feeders maximize feed efficiency and livestock health in any pasture or pen.

3 COMPARTMENT MINERAL FEEDER

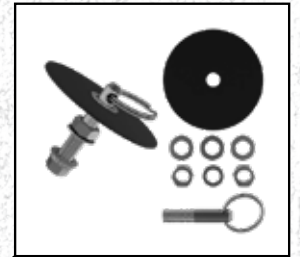


OPEN BOTTOM 41" W ROUND

The Century Products 3-compartment mineral feeder makes use of a category zero hitch-pin and key ring to provide superior protection from cattle tampering.

- Holds ~250 lbs.
- Hardware included
- Stake holes
- 3-year warranty
- 41" diameter
- 15" max depth

ITEM # CPMFCENT



CLOSED BOTTOM 37" W ROUND

This feeder's closed bottom prevents unwanted moisture and water from being trapped under the feeder.

- Holds ~200 lbs.
- Hardware included
- 3-year warranty
- 37" diameter
- 8" max depth
- Closed bottom

ITEM # CPCMFCENT

ASK ABOUT CUSTOM COLORS & PRIVATE LABELING!



CATTLE OILERS

Century Products' cattle oilers are designed to effortlessly help manage external parasites like flies, ticks, and lice by applying oil or insecticide to the animal's coat. Constructed from rugged polyethylene tanks with high-quality synthetic yarn, they deliver even, efficient application while rotating to prevent waste. These easy-to-mount, weather-resistant oilers are an essential tool in integrated pest management, promoting herd comfort and health with minimal labor.





FACE FLY OILER

The Face Fly oiler mounts easily on most mineral feeders and features a durable polyethylene tank that resists leaks, rust, and corrosion for reliable fly control.

- Can be mounted on some mineral feeders
- Includes mounting chains
- Tank measures 19" long and 4" diameter
- 1-gallon capacity
- Replacement mops available

ITEM # PT20030

PEST DOOM OILER

The Pest Doom oiler features a rugged 45" x 7" polyethylene tank with a 4-gallon capacity, dispensing oil only when rotated to ensure even application and eliminate waste for effective fly control.

- Tough polyethylene tank won't rust or corrode.
- Tank measures 45" long and 7" in diameter
- Has a 4-gallon capacity
- Includes mounting chains
- Replacement mops available

ITEM # PT20010

LEARN MORE ABOUT CP OILERS ➔





POLY STEPS

Century Products' Poly Steps are made from high-grade polyethylene for lightweight strength and all-weather durability. With wide, non-slip treads and molded handles, they're easy to move and built for safety. Ideal for barns, RVs, decks, pools, and more, they offer a low-maintenance, reliable step-up wherever you need it.



POLY 3 STEP

18"W X 23"H X 31.25"L



Don't miss out on having this easy to use, and well-designed polyethylene 3 Step with opening in the back for added storage.

- Heavily-textured
- Molded handle
- Compound color for long-lasting UV protection
- Weight tested to 500 lbs.
- 20 steps per pallet
- 3-year warranty



ITEM # CP3STP ● GREEN ● GREY

POLY 2 STEP

16"W X 19"H X 25.5"L

Sturdy and lightweight - weighing only 14 lbs - this polyethylene 2 Step features a built-in molded handle for convenience and an opening in the back for storage.

- 14 lbs.
- Heavily-textured
- Molded handle
- Weight tested to 500 lbs.
- 28 steps per pallet
- 3-year warranty



ITEM # CP2STP ● GREEN ● GREY

SMALL ANIMAL HUTS

Century Products' small animal huts offer a durable, one-piece shelter crafted from high-impact, UV-rated polyethylene, making them lightweight yet stable for a wide range of small livestock. Featuring a stackable design and adjustable venting, these huts are easy to handle, store, and adapt to seasonal needs. With rugged construction and thoughtful design, they provide reliable shelter with minimal upkeep.



SMALL ANIMAL HUT 72"W X 60"H ROUND

The Century Products Small Animal Hut provides shelter with the convenience of easy handling and storage through the stackable design.

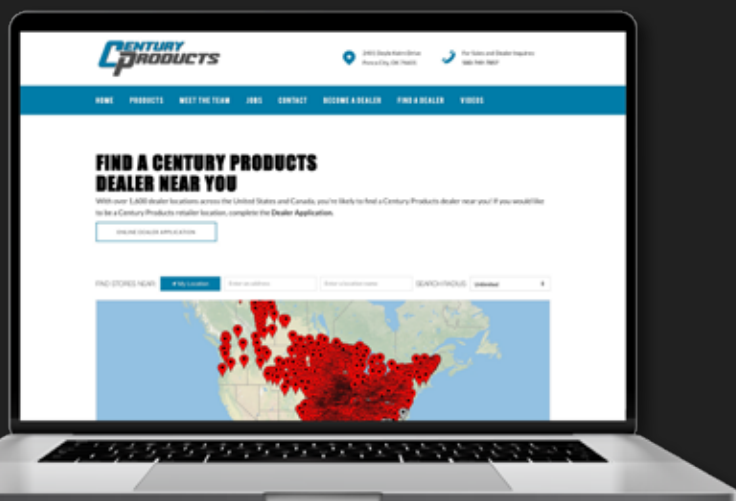
- 100 lbs.
- High-impact UV rated Polyethylene
- Adjustable Vent
- Tie-down holes for anchoring
- 3 Year Warranty

ITEM # CPMH WHITE

LEARN MORE [➔](#)



FIND A DEALER NEAR YOU



With over 1,600 dealers across the US and Canada, Century Products is never far from reach. Use our online dealer locator to find a trusted retailer near you and get the durable, American-made products you need—right where you are.

FIND A DEALER →



Interested in becoming a CP dealer?
Just complete the online Dealer Application
and our sales team will contact you.

APPLY NOW →



CENTURYPRODUCTSUSA.COM



HDPE DRAINAGE

Century Products' HDPE corrugated pipe and fittings offer a versatile, eco-friendly solution for drainage and storm water needs, meeting ASTM and AASHTO standards for professional-grade performance. Manufactured from high-density polyethylene resin, this piping is durable, corrosion-resistant, and ideal for a variety of applications. Lightweight yet strong with sizes from 4" to 60" diameter, these pipes are built to deliver long-lasting infrastructure with minimal upkeep.





HDPE CULVERTS 4" TO 60" DIAMETER 10' TO 30' LENGTHS

Century Products' HDPE corrugated pipe is a durable, lightweight, and corrosion-resistant solution for drainage, culverts, and storm water management—built to meet ASTM and AASHTO standards.

- Meets ASTM and AASHTO standards for reliable performance
- Strong, flexible, and resistant to corrosion and impact
- Gasketed connections ensure watertight seals
- Lightweight design allows for quick, easy installation



LEARN MORE ➔



APPLICATIONS

- **Culverts/Cross Drains**
- **Waterways**
- **Storm Sewers**
- **Slope/Edge Drains**
- **Mining/Forestry**
- **Foundation Drains**
- **Downspout Drains**
- **Ditch Enclosures**
- **Grain Aeration**
- **Retention/Detention**

ACCESSORIES





CENTURY
PRODUCTS
Official Stock Tank of ProRodeo



VIEW THE FULL PRODUCT LINEUP AT [CENTURYPRODUCTSUSA.COM](https://www.centuryproductsusa.com)

580-749-7857

SALES@CENTURYPRODUCTSUSA.COM

[f](#) [i](#) [j](#) [v](#) [x](#)

