

2- AND 4-HOLE AUTOMATIC WATERER

Item # CPAW2 & Item # CPAW4



Tools Required:

- Phillips Screwdriver
- Flathead Screwdriver
- Crescent Wrench

Kit:

- Bottom Gasket
- Hose with Hose Attachment
- Insulation for Hose
- Anchor Bolts



SCAN FOR MORE
RESOURCES

Instructions:

Step 1: Remove the disc/valve assembly.

Step 2: Attach the hose to the bottom of the valve.

Step 3: Place in the center of the cone.

Step 4: Install the bottom gasket and attach to water supply.

Step 5: Attach the valve assembly to the cone.

Step 6: Assemble the float. Follow the instructions provided in the box.

Step 7: Attach the assembled float to the valve.

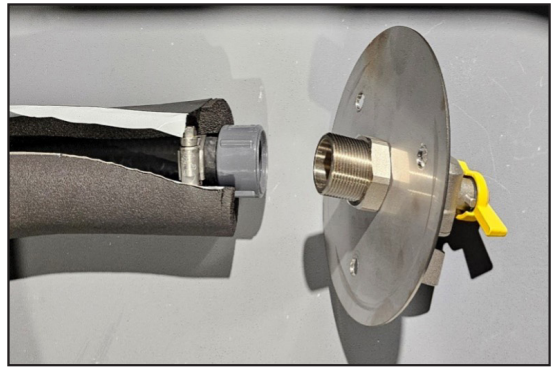
Step 8: Set the float to desired water level.

Step 9: Put the balls into the 4 corners or 2 sides of the tank.

Step 10: Place and secure the lid.

Step 11: Anchor the waterer to a concrete base using the included anchors, then fill the tank with water.

Step 12 : Attach the access lid.



Step 2: Attach hose to bottom of valve



Step 5: Attach valve to cone



Step 7: Attach float to valve